

HANDMADE EARRINGS



2-052
DAINTY



2-012
SMALL WISP



2-049
OVAL DANUBE



2-057
MICRO DOVE



2-085
WALLABY



2-089
WEALD



2-110
FLUTE



2-116
SMALL LILY



2-092
DANUBE



2-184
AKIMBO



2-117
SMALL LILY
WITH PEARL



2-216
LITE WILDHEART



2-181
WARBLE



2-166
GANGES

HANDMADE EARRINGS



2-201
RAVINE



2-208
ASTRAL



2-447
OPEN FEATHER



2-270
CRESCENT HOOP



2-473
TINY WALLABY



2-641
MEDIUM AMAZON



2-457
EUROLILY



2-410
CROSSING



2-238
CANDLELIGHT



2-752
NEW LOOP



2-449
NEW BUDS



2-446
NEW FEATHER



2-696
LEMON TWIST

HANDMADE EARRINGS



2-143
WIDGEON



2-438
FOOD CHAIN



2-164
SEINE



2-917



2-784
BREEZE PEARLS



2-594



2-259



2-679
WHIFFLE



2-136
FRENCH WRAP

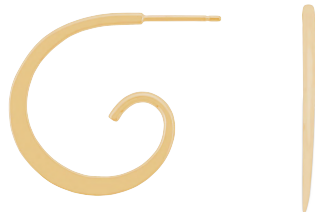
HANDMADE EARRINGS



2-338
SPIRAL DUSTER



2-286
SPIRAL LARGE



2-109
LARGE SPIRAL



2-249
SPIRAL MEDIUM



2-246
SPIRAL DANGLE



2-248
SPIRAL SMALL



2-106
SMALL SPIRAL



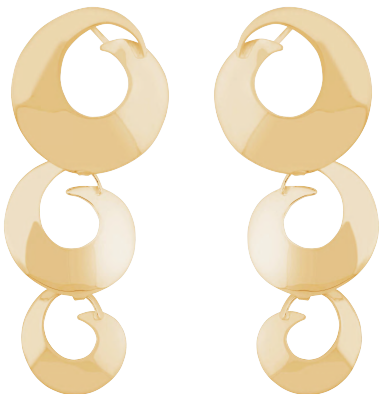
2-244
LARGE ARC HOOP



2-243
MEDIUM ARC LOOP



2-242
SMALL ARC HOOP



2-245
GALAXY DUSTER



2-798
GALAXY

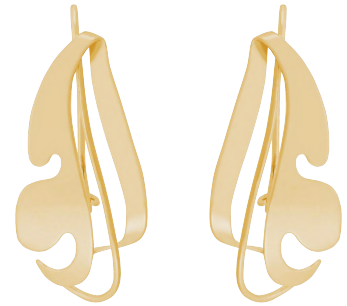
HANDMADE EARRINGS



2-029
CURSIVE



2-252
RAVEN



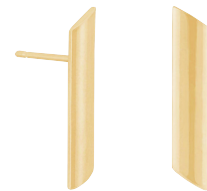
2-264
FERN



2-144
CAPER



2-204
NEW TWIST



2-595
ANGLE

HANDMADE EARRINGS



2-033
Sm Elipse
Pearl/2mm Ruby



2-075
Elipse/Bead
2mm Aquamarine



2-007
Sm Elipse
2.5mm Ruby/2mm Dia



2-016
Sm Elipse/Bead
2mm Sapphire



2-074
Elipse
3mm Sapphire/2mm Dia



2-076
Elipse
Pearl/2mm Emerald

HANDMADE EARRINGS



2-086
Sm Oval
Pearl



2-077
Sm Oval
3mm Citrine



2-120
Oval
Pearl



2-130
Open Elipse
Pearl



2-119
Oval
4mm Peridot



2-128
Sm Open Elipse
3mm Blue Topaz



2-121
Sm Open Elipse
3x3 Tanzanite



2-129
Open Elipse
3mm Sapphire